

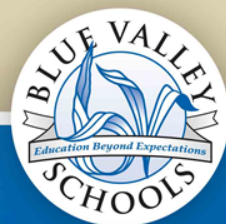


enVision Math

Pearson Publishing

Brief program overview

2013-2014





enVisionMATH

- Written specifically to address the KCCRS
- Researched based
- Allows for conceptual development for essential understanding
- Creates problem based interactive learning
- Students build from concrete to pictorial and finally abstract thinking and use the 8 mathematical practices



Daily Lesson Outline:

- Consists of four parts:



-Part one: Daily Review

-Reviews key concepts from the previous day's lessons in a variety of ways with 3-4 questions

-Part Two: Problem Based Interactive Learning

-Students are engaged in mathematical conversation by interacting with peers based on a question provided from their teacher, creating questions, using manipulatives, and using the mathematical practices.



- Part Three: Visual Learning, Guided Practice, Independent Practice and Problem Solving

-Students can see and watch the visual learning animation to expand on the concept and then are guided through practice problems with the help of their teacher. Students are then asked to independently solve problems. This includes questions expanding on the days topic.

- Part Four: Close and Assess, Differentiated Instruction, and Levelled Homework

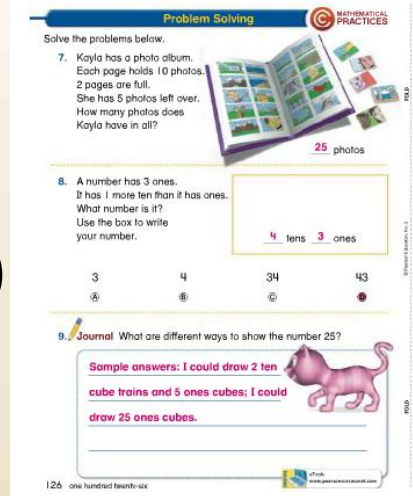
-Students are assessed by their teacher and k-2 students move to centers which 3-5 students move to leveled homework. Guided math takes place.



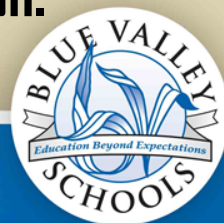
EnVision Math:

- Divided into mathematical domains:

1. Operations in Algebraic Thinking
 2. Number and Operations in Base 10
 3. Number and Operations-Fractions (3-5)
 4. Measurement and Data
 5. Geometry
- * Counting and Cardinality (Kindergarten only)



Each domain is taught through entirely before moving on to the next domain. Skills are reviewed from previous domains in the Daily Common Core Review of the daily lesson.



Resources for students:

1. All students will receive login information for an account on

www.pearsonsuccessnet.com

~ This will give students and parents access to online games, daily visual learning bridge animation that reinforce the skills of the daily lesson, and a daily quiz that allows teachers to assess students learning. After completing that assessment students are provided with leveled homework based on the score of their assessment: Re-teaching, Practice and Enrichment

Topic 1



Multiplication and Division: Meanings and Facts

